

WELCOME, THIS WEB CONFERENCE WILL BEGIN SOON

INVOLVING FAMILIES
IN TEEN DATING ABUSE PREVENTION



PreventConnect
1215 K Street
Suite 1850
Sacramento, CA 95814

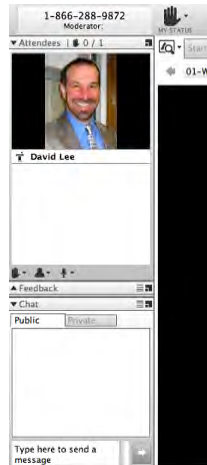
Website: preventconnect.org
Facebook: www.facebook.com/PreventConnect
Twitter: Follow @PreventConnect
Flickr: www.flickr.com/people/preventconnect
YouTube: www.youtube.com/CalcASAVideo
Email Group (listserv): <http://groups.yahoo.com/group/Prevent-Connect/>
Email: info@preventconnect.org



PreventConnect is a national project of the California Coalition Against Sexual Assault sponsored by U.S. Centers for Disease Control and Prevention. The views and information provided in this web conference do not necessarily represent the official views of the U.S. government, CDC or CALCASA.



How to use this technology



- Raise hand
- Text chat
- PowerPoint slides
- Polling questions
- Phone

Please send a private chat message for help.

Call iLinc Technical Support at 800.799.4510.



2012 Web Conferences

Connect for Success:

Enhancing impact through innovative partnerships

- A Good Solution Solves Multiple Problems (April 24, 2012)
- Social Change and Social Justice: Building Bridges Between Movements (May 22 & 23, 2012)
- Don't Let Prevention Stand Alone: Integrating Prevention Efforts in Your Agency and Community (June 13 & 14, 2012)
- Expanding the Evidence Dialogue I: Exploring Research, Community Context and the Experiences of Practitioners to determine *What Works*. (June 18 & 20, 2012)
- How Can We Help? Developing Shared Goals For Diverse Community Priorities (July 31, 2012)
- When Place is the Focus: Connecting Sexual and Domestic Violence Prevention Approaches to Your Local Community (August 15 & 16, 2012)
- Expanding the Evidence Dialogue II: Balancing Research, Community Context and the Experiences of Practitioners to determine *What Works*. (September 18 & 19, 2012)



PreventConnect

- Domestic violence/Intimate partner violence
- Sexual violence
- Violence across the life-span
- Prevent before violence starts
- Connect to other forms of violence & oppression
- Connect to other prevention practitioners



Involving Families in Teen Dating Violence Prevention

PRESENTERS: VANGIE FOSHEE, LUZ MCNAUGHTON REYES, LENNY MUJICA

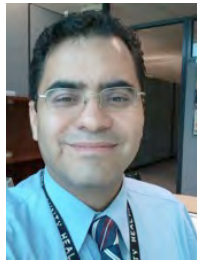




Vangie Foshee, PhD
University of North Carolina
at Chapel Hill



Luz McNaughton Reyes, MPH
University of North Carolina
at Chapel Hill



Lenny Mujica, LCSW, MSW
Broward County Health
Department, Florida



Learning Objectives

- Describe the challenges and benefits of engaging families in teen dating abuse prevention
- Gain an understanding of the development, structure and conceptual basis of Families for Safe Dates
- Describe and evaluate the “evidence” for Families for Safe Dates
- Identify and discuss considerations in implementing Families for Safe Dates in your communities
- Become aware of other efforts by the study team at involving families in teen dating abuse prevention



Presentation Agenda

- Involving families in dating abuse prevention: Challenges and benefits
- Families for Safe Dates:
 - Structure, development, and conceptual basis Evaluation
 - Implementation in your communities
- Other family-based dating abuse prevention programs we are currently evaluating



Why families?



Why focus on families to prevent teen dating violence?



Why focus on families?

- School-based dating abuse prevention can be difficult
 - Takes away from academic time
 - Fear of parental response to a sensitive topic
 - Time is very limited
- We need dating abuse prevention programs that can be delivered independent of schools



Why a Family-Based Program?

- Families impact DA risk factors
- Families have a persistent influence
- Families are the primary context in which adolescents acquire information and values
- Family-based programs have been effective in preventing other types of youth violence
 - For model programs see: <http://www.colorado.edu/cspv/blueprints/>



Working with families

How many of you have been involved with family-based programs to prevent adolescent dating violence?


Answer on the left

Feedback

Yes

No

No Answer



Working with families

... to prevent other adolescent risk behaviors?


Answer on the left

Feedback

Yes

No

No Answer



Working with Families

THERE ARE MANY
REWARDS!!!



Rewards

*Dear Kim,
Thank-you so much for this wonderful opportunity. My son is 15 and I thought he would not be very receptive. But he has really gave it his full attention and we work on the booklets and talk about things days later. I have even heard him talking about date rape with his buddies and how some of the signs really mean "no." It has helped make difficult discussion open and informative. Thank you again so very much.*

Thank you I ♥️ doin these with my mom



Challenges



What challenges have you faced when doing programs with parents to prevent adolescent risk behaviors?



One of the biggest challenges?

- FAMILIES ARE BUSY!



Characteristics of typical family-based programs

- High demands on family time
- Require travel
- Attract a small minority of eligible participants
- Benefit a small proportion of those in need
- Attract parents of adolescents least in need
- Selected/indicated, not universal
- Expensive (trained professionals and ↑ incentives)



Structure of Families for Safe Dates


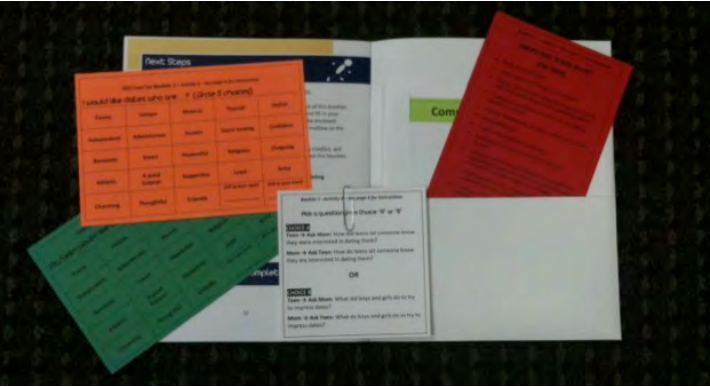
- Universal program
- Six booklets
 - Mailed to parents
 - Include information and activities for parents and teens (13 to 15 years old) to do together.
- Each booklet followed by a telephone call from a health educator who answers questions, motivates participation, and provides additional information if needed.



Families for Safe Dates



Families for Safe Dates



How was Families for Safe Dates Developed?

- Theoretically-based conceptual model
- Incorporated some content from Safe Dates
- Formative research:
 - Over 100 focus groups with caregivers and teens (stratified by race/ethnicity and gender of the adolescent)



Focus Group Quotes

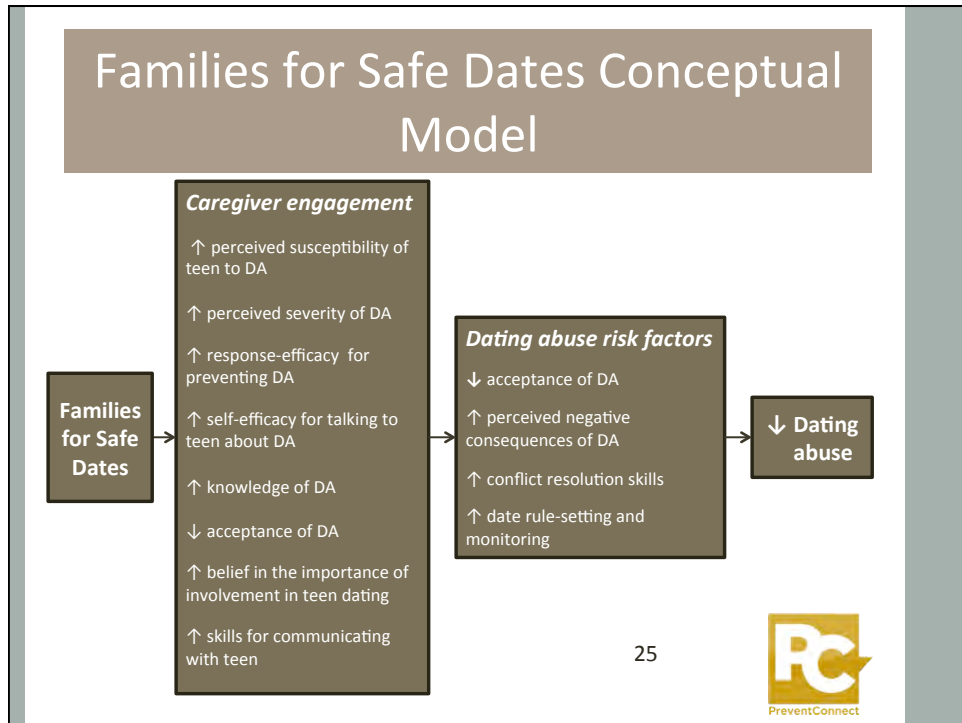
"My daughter and I opened up a discussion that probably should have taken place a long time ago. But as a parent, I did not know how to start that conversation. I am going to go back to my older daughter with these books."



"It was helpful in breaking the ice with my parents. It helped us get a lot of those uncomfortable feelings about talking about stuff out of the way so now we can all talk about that kind of stuff." (teenage boy)



"This is the first time I've ever really talked to my mom about boys and it got somewhere. Usually we argue, but this time it was constructive. That is why I liked this program." (teenage girl)





Families for Safe Dates Booklets

- Getting Started: Introducing Caregivers to Families for Safe Dates
- Booklet 1: Talking About Dating
- Booklet 2: Skills for Handling Conflict
- Booklet 3: Recognizing Dating Abuse
- Booklet 4: Preventing Date Rape
- Booklet 5: Planning for the Future

Evaluation

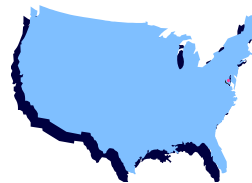


How can we tell if a program works or not?



Evaluation: Design

- Study design:
 - Randomized control trial
 - Telephone assessments at baseline and follow-up
 - Follow-up 3 months after treatment
 - National sample of caregivers and teens 13-15 years old (n=514)
 - 96% of caregivers were mothers
 - 58% of teens were female
 - 12% Black, 5% Latino



Foshee, VA, Reyes HLM, Ennett ST, Cance JD, Bauman KE, & Bowling MJ. (2012). Assessing the effects of *Families for Safe Dates*, a family-based teen dating abuse prevention program. *Journal of Adolescent Health*, Vol 51, pp. 349-356.

[http://www.jahonline.org/article/S1054-139X\(11\)00718-X/abstract](http://www.jahonline.org/article/S1054-139X(11)00718-X/abstract)



Evaluation: Design

- Outcomes:

- Primary
 - Caregiver engagement
 - Dating abuse risk factors
- Secondary
 - Dating violence victimization and perpetration

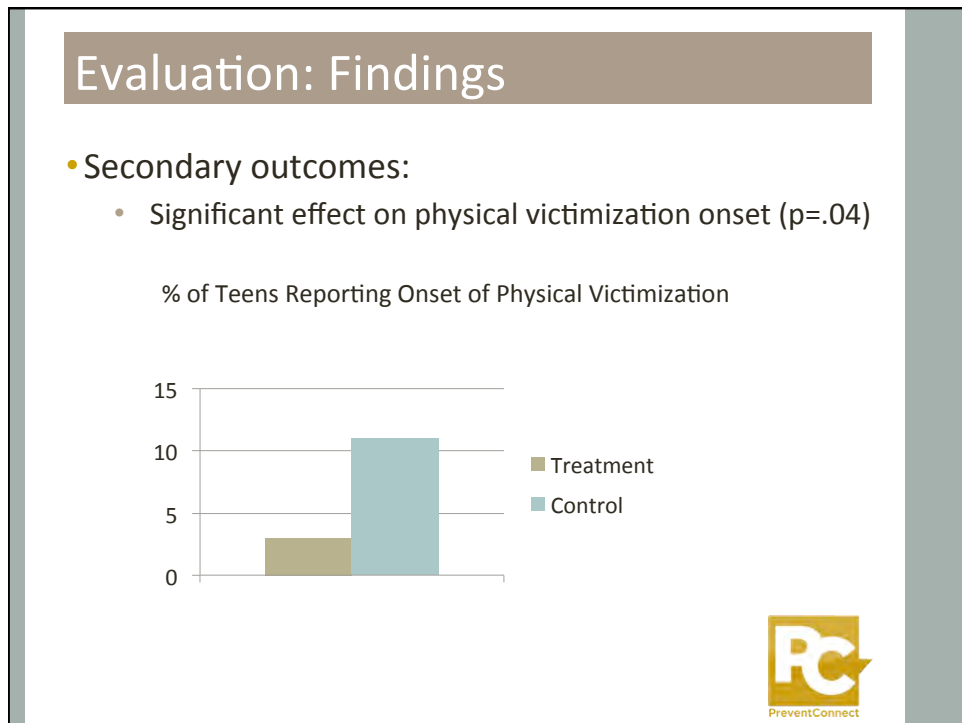
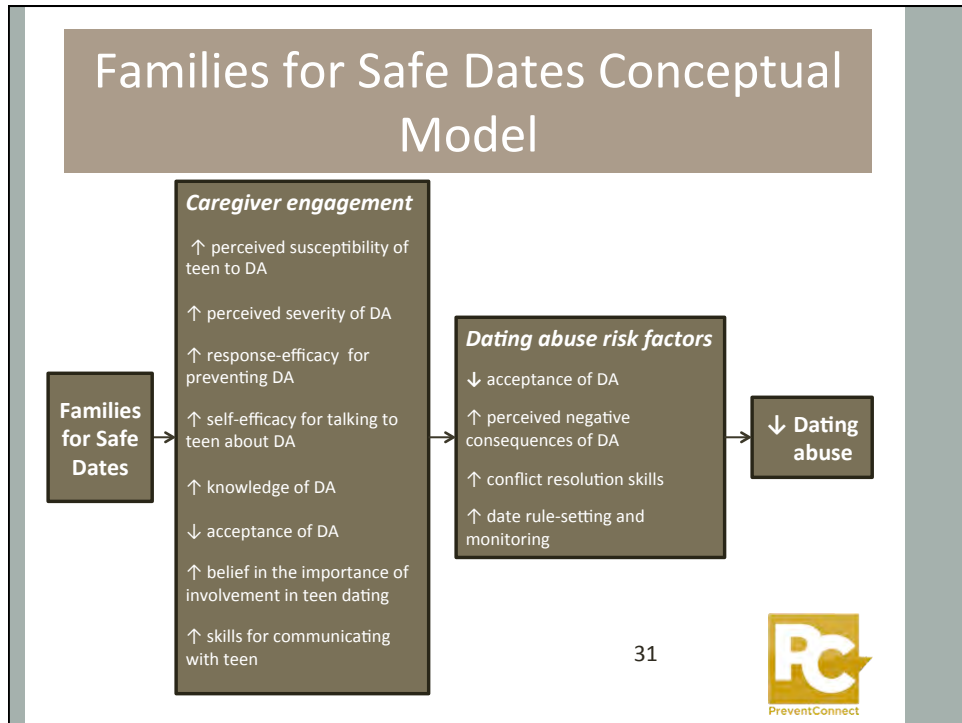


Evaluation: Findings

- Program exposure:

- Treatment group families:
 - 88% completed at least one booklet
 - 69% completed all six booklets
- Caregiver reactions:
 - 100% viewed the program as very or somewhat helpful
 - 94% said teen was very or somewhat willing to participate
 - 96% said program was very or somewhat convenient
 - 94% said they would recommend the program to others

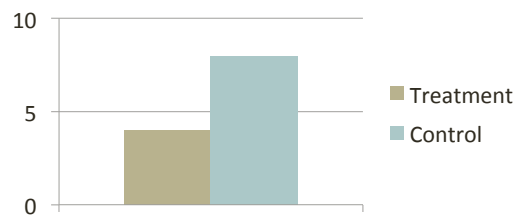




Evaluation: Findings

- Secondary outcomes:
 - No effect on physical perpetration onset ($p=.25$)

% of Teens Reporting Onset of Physical Perpetration



Evaluation: Findings

- Secondary outcomes:
 - Marginal \downarrow in psychological perpetration ($p=.09$)
 - No effects on psychological victimization ($p=.14$)



FSD on the Evidence Continuum

The diagram illustrates the Evidence Continuum. At the top, a horizontal arrow labeled 'Effectiveness' points from right to left, with 'High' on the left and 'Low' on the right. On the left side, a vertical arrow labeled 'Strength of Evidence' points upwards, with 'Strong' at the top and 'Weak' at the bottom. The continuum is represented by seven vertical bars of varying heights and colors, from left to right: 'Well Supported' (tallest, blue), 'Supported' (medium-tall, blue), 'Promising Direction' (medium, blue), 'Emerging' (short, blue), 'Undetermined' (shortest, blue), 'Unsupported' (medium-tall, grey), and 'Harmful' (tallest, grey). A dashed box labeled 'Standards of Ethics' is positioned to the right of the 'Unsupported' and 'Harmful' bars.

Understanding Evidence
Part 1: Best Available Research Evidence

Puddy, R. W. & Wilkins, N. (2011). *Understanding Evidence Part 1: Best Available Research Evidence. A Guide to the Continuum of Evidence of Effectiveness*. Atlanta, GA: Centers for Disease Control and Prevention.
www.cdc.gov/violenceprevention/pub/UnderstandingEvidence_pt1.html

PreventConnect


BROWARD COUNTY, FL

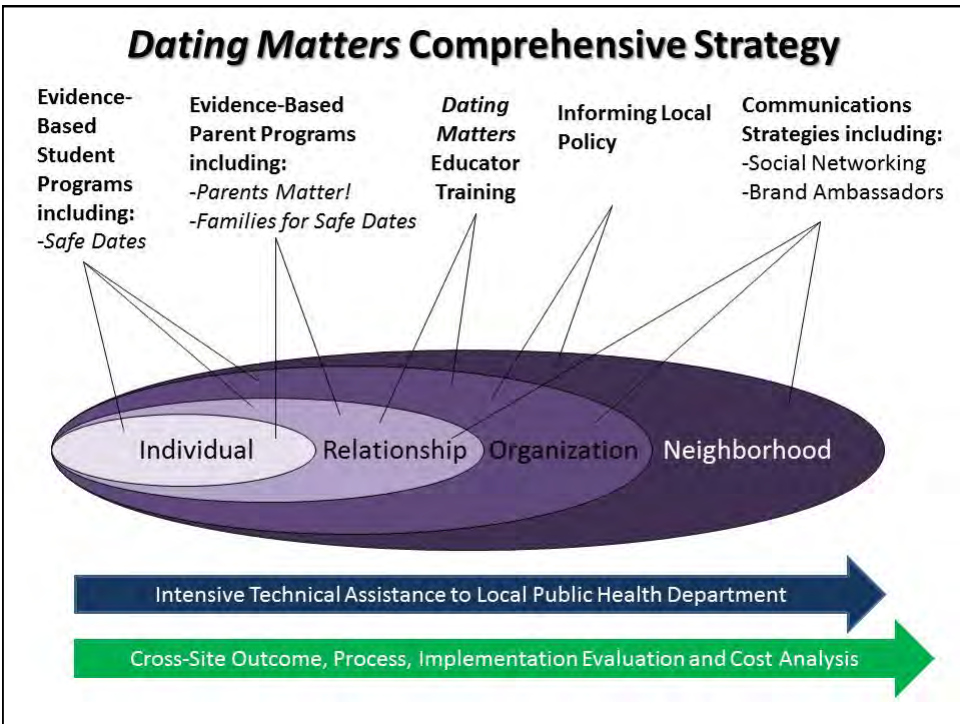
Planning to Implement Families for Safe Dates:
One Community's Perspective

PreventConnect

Dating Matters

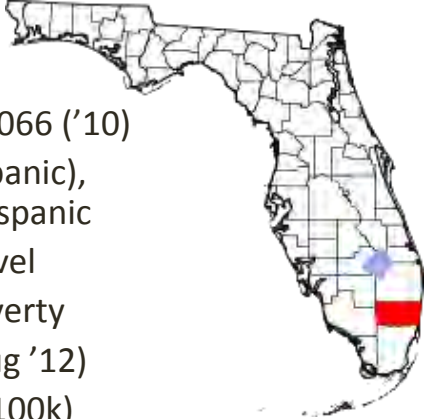
- Seeks to address gaps in research and practice by:
 - Developing comprehensive prevention program for youth, their parents, educators, and neighborhoods in high risk urban communities
 - Engaging local public health sector in TDV prevention
- Goals
 - Promote respectful, nonviolent dating relationships
 - Decrease emotional, physical, and sexual dating violence







Broward County

- Estimated pop. 1,748,066 ('10)
- 43.5% White (not Hispanic), 26.7% Black, 25.1% Hispanic
- 13% below poverty level
- 15.5% under 18 in poverty
- 8.1% Unemployed (Aug '12)
- Crime rate 4265 (per 100k)
- Median household income \$48,772('09)

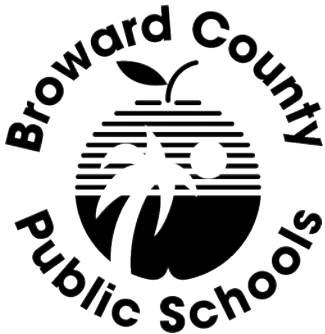








Broward County Public Schools

- Sixth largest district in U.S.
- Serving over 258,000 students from 173 countries (53 languages)
- Dating Matters Program Schools:
 - 82 % Free and Reduced Lunch
 - Median Income \$38,717
 - Violent Crime 5,844 (per 100K)
 - 85% Minority







Strategy

- Wide Distribution
- Inform / Raise awareness
- Utilize Existing Resources
- Incentivize Responses
- Incentivize Completion



Questions



Other Family-Based dating Abuse Prevention Programs Developed and Being Evaluated by the Research Team

Mom and
Teens
for
Safe Dates



NOVIOLencia:
Preparing our Teens
for Healthy and Safe
Dating



What other family -
based dating abuse
prevention programs
are being implemented?
How are they
evaluated?



Families for Safe Dates

Hazelden Publishing and Educational Services

1-800-328-9000

http://www.violencepreventionworks.org/public/safe_dates.page

Available in Spanish and English



PreventConnect
1215 K Street
Suite 1850
Sacramento, CA 95814

Website: preventconnect.org

Facebook: www.facebook.com/PreventConnect

Twitter: Follow @PreventConnect

Flickr: www.flickr.com/people/preventconnect

YouTube: www.youtube.com/CalCASAVideo

Email Group (listserv): <http://groups.yahoo.com/group/Prevent-Connect/>

Email: info@preventconnect.org



PreventConnect is a national project of the California Coalition Against Sexual Assault sponsored by U.S. Centers for Disease Control and Prevention. The views and information provided in this web conference do not necessarily represent the official views of the U.S. government, CDC or CALGASA.

